

SPECIFICATIONS



Model No.			SRIH 20-35S	SRIH 25-45S	SRIH 30-55S	SRIH 37-70S	SRIH 45-70S
Power supply			400V / 3Ph / 50Hz				
Capacity	Cooling *	W	25000 - 35200	35900 - 45700	50200 - 62000	57300 - 70100	60300 - 72400
	Heating *	W	26250 - 36950	38100 - 49400	52700 - 64100	61500 - 73000	62100 - 74000
Input power	Cooling *	W	8333 - 11733	11966 - 15233	16733 - 20666	19100 - 23366	20100 - 24133
	Heating *	W	8749 - 12319	12564 - 15994	17569 - 21699	20055 - 24534	21105 - 25339
COP Full Load - 60%			3.00 - 3.50	3.00 - 3.50	2.90 - 3.40	3.00 - 3.50	2.90 - 3.40
Evaporator	Air Flow *, **	m³/s	1.5 / 2.0 / 2.50	2.0 / 2.5 / 3.0	2.5 / 3.2 / 4.0	2.8 / 3.7 / 4.5	3.5 / 4.5 / 5.3
	Ext. Static Pressure	Pa	150	150	150	200	200
	Drain Pipe Size	mm	3/4"				
Dimensions	W x D x H	mm	1608 x 2054 x 1689		2055 x 2305 x 1813	2055 x 2305 x 2063	
Weight		kg	750	780	1150	1260	1280
Condenser Air Flow	Cooling	m³/s	4.27	4.27	8.08	9.5	9.68
Outdoor Operating Range	Cooling - min - max	°CDB	15 - 42				
	Heating - min - max	°CWB	-5 - 18				
Refrigerant	Type / GWP		R410A / 2088				
	Charge	kg	1 x 10.0	1 x 13.1	1 x 8.3 / 1 x 9.8	2 x 11.0	2 x 11.0

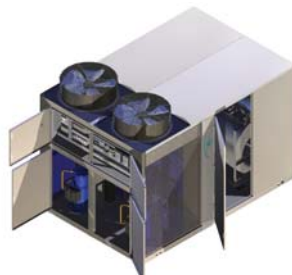
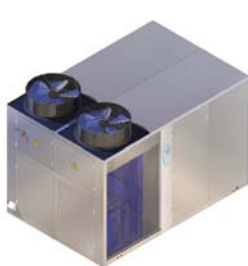
* The units can operate in a wide range of airflow and capacity, when the units, airflow decreases the capacity will also decrease and when the units airflow increases the capacity will also increase. Therefore the low airflow should be read together with the low capacity and the high airflow should be read together with the high capacity.

** Although the airflows are indicated as three speeds none of the fans are three speed fans, a fan is selected based on the required airflow and the pulleys are changed to achieve the required airflow.

Model No.			SRIH 45-90S	SRIH 54-110S	SRIH 67-115S	SRIH 67-145S	SRIH80-150S
Power supply			400V / 3Ph / 50Hz				
Capacity	Cooling *	W	77800 - 90900	92700 - 110000	97000 - 114000	130000 - 150000	135000 - 156000
	Heating *	W	84900 - 98900	100200 - 115400	99300 - 117200	133300 - 160800	137600 - 163300
Input power	Cooling *	W	25933 - 30300	30900 - 36666	32333 - 38000	43333 - 50000	45000 - 52000
	Heating *	W	27229 - 31815	32445 - 38499	33949 - 39900	45499 - 52500	47250 - 54600
COP Full Load - 60%			2.90 - 3.40	2.90 - 3.40	3.00 - 3.50	3.00 - 3.50	2.90 - 3.40
Evaporator	Air Flow *, **	m³/s	3.5 / 4.5 / 5.3	4.5 / 5.4 / 6.7	5.4 / 6.7 / 8.0	5.4 / 6.7 / 8.0	6.5 / 8.0 / 9.5
	Ext. Static Pressure	Pa	200	250	250	250	250
	Drain Pipe Size	mm	3/4"				
Dimensions	W x D x H	mm	2055 x 2305 x 2063	2255 x 2805 x 2063	2255 x 3105 x 2063		2255 x 3405 x 2063
Weight		kg	1320	1660	1690	1850	1930
Condenser Air Flow	Cooling	m³/s	10.36	13.34	13.34	15.86	15.86
Outdoor Operating Range	Cooling - min - max	°CDB	15 - 42				
	Heating - min - max	°CWB	-5 - 18				
Refrigerant	Type / GWP		R410A / 2088				
	Charge	kg	2 x 13.0	1 x 18.0 / 1 x 13.7	1 x 19.0 / 1 x 14.3	1 x 24.7 / 1 x 18.8	1 x 25.7 / 1 x 19.6

Please Note :

The above capacities are based on: Evaporator On Coil : 27°C / 19°C, Ambient : 35°C / 26.1°C and Altitude 0 masl. Eco Aire (Pty)Ltd Reserves the right to change any data on this sheet due to technical development without prior notice.



AC - CENTRIFUGAL FAN



EC - BACKWARD CURVE FAN